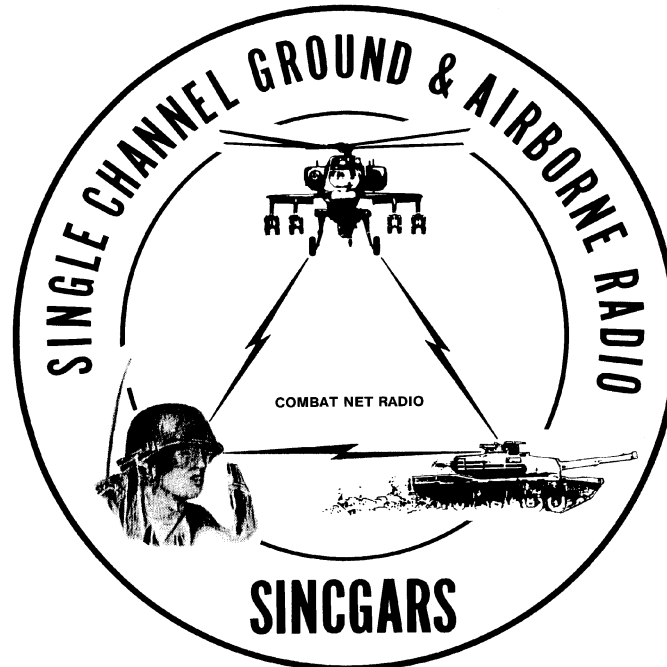


TECHNICAL BULLETIN



**INSTALLATION INSTRUCTIONS FOR
INSTALLATION KIT,
ELECTRONIC EQUIPMENT, MK-2838/VRC
(NSN 5895-01-420-4656) (EIC: N/A)
TO PERMIT INSTALLATION OF RADIO SET
AN/VRC-92 SERIES**

**IN A
INFORMATION AND COORDINATION CENTRAL AN/MSQ-
116 OR ENGAGEMENT CONTROL STATION AN/MSQ-114**

Approved for public release; distribution is unlimited.

HEADQUARTERS, DEPARTMENT OF THE ARMY

1 SEPTEMBER 1999

**INSTALLATION INSTRUCTIONS FOR
INSTALLATION KIT
ELECTRONIC EQUIPMENT MK-2838/VRC
(NSN 5895-01-420-4656) (EIC: N/A)
TO PERMIT INSTALLATION OF RADIO SETS
AN/VRC-92 SERIES
IN
INFORMATION AND COORDINATION CENTRAL AN/MSQ-116 OR
ENGAGEMENT CONTROL STATION AN/MSQ-104**

REPORTING OF ERRORS AND RECOMMENDING IMPROVEMENTS

You can help improve this manual. If you find any mistakes or if you know of a way to improve the procedures, please let us know. Mail your letter, DA Form 2028 (Recommended Changes to Publications and Blank Forms), or DA Form 2028-2 located in the back of this manual direct to: Commander, US Army Communications-Electronics Command Fort Monmouth, ATTN: AMSEL-LC-LEO-D-CS-CFO, Fort Monmouth, NJ 07703-5000. The Fax number is 732-532-1413, DSN 992-1413. You may also e-mail your recommendation to AMSEL-LC-LEO-PUBS-CHG@cecom3.monmouth.army.mil.

In either case, a reply will be furnished direct to you.

TABLE OF CONTENTS

Subject	Section	Page
Scope	0.1	1
General Information	0.2	1
Maintenance Forms, Records, and Reports	0.3	1
Reports of Maintenance and Unsatisfactory Equipment.....	0.3.1	1
Report of Packing and Handling Deficiencies	0.3.2	1
Discrepancy in Transportation Deficiency Report (TDR) (SF 361).....	0.3.3	1
Consolidated Index of Army Publications	0.4	1
Purpose of Installation.....	1.	2
End Item or System to be Modified	2.	2
Application Times.....	3.	2
Time for Completion of Installation	3.1	2
Time for Installation of One Assembly or Component	3.2	2
Preparation for Installation	4.	2
Preparation of Vehicle.....	4.1	2
Preparation of MK	4.2	2
MK, Distribution, and Consumables	4.3	3
Tools and Test, Measurement, and Diagnostic Equipment (TMDE) Required	4.4	8
Installation Procedures.....	5.	9
Installation of Antenna, Vehicular, AS-3900/VRC (antenna)	5.1	11
Installation of Antenna Base	5.1.1	11

*This manual supersedes TB 11-5820-890-20-2, 1 September 1993

Installation of Top Antenna Assembly	5.1.2	13
Installation of Loudspeaker, Control-Unit, LS-671/VRC (speaker)	5.2	14
Installation of Mounting Base, Electrical Equipment MT-6352/VRC (mounting base).....	5.3	16
Installation of Cables	5.4	18
Installation of Mounting Base, Electrical Equipment MT-6353/VRC.....	5.5	20
Post-Installation and Checkout	5.6	21
Appendix A References		A-1

LIST OF ILLUSTRATIONS

Figure	Title	Page
4-1(1)	MK Illustrated Parts List.....	5
4-1(2)	MK Illustrated Parts List.....	6
4-2	Illustrated Parts List for Table 4-2.....	7
5-1(1)	MK and Radio Installation: MK Equipment Locations	9
5-1(2)	MK and Radio Installation: Radio Equipment Locations	10
5-2	Antenna Base Installation	12
5-3	Top Antenna Assembly Installation	13
5-4(1)	Loudspeaker Installation.....	14
5-4(2)	Mounting Plate Installation.....	15
5-5	Mounting Base Installation.....	17
5-6	Cable Installation.....	19
5-7	MT-6353/VRC Mounting Base Installation	20
5-8	Cable Diagram : For AN/VRC-92 Series.....	22

LIST OF TABLES

Number	Title	Page
4-1	Parts List for Installation of Radio Set AN/VRC-92 Series.....	4
4-2	Additional Items Required for Installation of Radio Set(s) AN/VRC-92 Series.....	6

0.1 SCOPE.

This technical bulletin provides installation instructions for Installation Kit, Electronic Equipment MK-2838/VRC, commonly referred to as the Mounting Kit (MK). The MK shall be installed into the following type of vehicle(s):

- Information and Coordination Central AN/MSQ-116 or Engagement Control Station AN/MSQ-104.

The MK is used for installation of radio set components at field locations. The information contained in this technical bulletin is the official authorization to perform the installation at the unit maintenance level.

NOTES

- This technical bulletin is not an authorization for requisition or turn-in of vehicles.
- This technical bulletin does not establish quantity or types of vehicles assigned to using units.

This technical bulletin does not contain information on the maintenance or replacement of the MKs. This information is contained in the MAC of TM 11-5820-890-20-2, TM 11-5820-890-20-4 and RPSTL of TM 11-5820-890-20P.

0.2 GENERAL INFORMATION.

The MK becomes operable when all the radio set components are installed in the vehicle and correct power is supplied. Refer to TM 11-5820-890-20-1 or TM 11-5820-890-20-4 for installation, Operational (OP) Check instructions, and required maintenance procedures. Refer to TM 11-5820-890-20P for repair parts.

Included in the radio set AN/VRC-92 Series is:

- Radio Set AN/VRC-92 Series (for RT-1523(C)/U)

0.3 MAINTENANCE FORMS, RECORDS, AND REPORTS.

0.3.1 Reports of Maintenance and Unsatisfactory Equipment. See Section 4.2.2.3 for information.

0.3.2 Report of Packing and Handling Deficiencies. See Section 4.2.2.1 for information.

0.3.3 Discrepancy in Transportation Deficiency Report (TDR) (SF361). See Section 4.2.2.2 for information.

0.4 CONSOLIDATED INDEX OF ARMY PUBLICATIONS.

Refer to the latest issue of DA Pam 25-30 to determine whether there are new changes, or additional publications pertaining to the equipment.

1. PURPOSE OF INSTALLATION.

The Installation Kit Electronic Equipment MK-2838/VRC (MK) contains the items needed to mount Radio Set AN/VRC-92 Series in a Information and Coordinating Central AN/MSQ-116 or an Engagement Control Station AN/MSQ-104. See Section 5.5 for instructions to install Mounting Base MT-6353/VRC.

2. END ITEM OR SYSTEM TO BE MODIFIED.

Not applicable.

3. APPLICATION TIMES.

3.1 Time for Completion of Installation. Using two people, a total of 3.5 work hours is required. Typical vehicle downtime is 4.0 hours.

3.2 Time for Installation of One Assembly or Component. The following table lists the time required to install one component. All times have been rounded off to the nearest half hour. The sum of these items will not reflect the typical vehicle downtime.

ITEM	SECTION	TIME
Antenna AS-3900/VRC	5.1	1.0
Mounting Base, Electrical Equipment MT-6352/VRC	5.3	1.5
Cables	5.4	0.5

4. PREPARATION FOR INSTALLATION.

This section explains how to prepare the vehicle and MK for installation.

4.1 Preparation of Vehicle. To prepare the vehicle for installation, insure that the site includes adequate lighting and a power source when drilling is required. Inspect the vehicle for damage that could affect installation. Have any such damage repaired before installing MK.

4.1.1 Items to be Removed. Remove existing AN/VRC-12 radio family installation kit/harness. See TM 11-5820-401-20-2 for removing items used with intercom systems, or TM 11-5820-401-20-1 (used without intercom systems), and TM 9-2320-289-20.

4.1.2 Items to be Retained. Not applicable.

4.2 Preparation of MK. To prepare MK, unpack, inspect and check inventory.

4.2.1 Precautions During Handling. Observe these steps to prevent equipment damage.

- a. Keep dust cover in place on connectors.
- b. Do not disassemble or modify parts in MK unless authorized to do so.
- c. Keep mounting hardware covered and protected until needed.
- d. When exposed to moisture, rain or salt water, keep all parts dry to prevent corrosion.

4.2.2 Unpack and Inspect Equipment.

4.2.2.1 Inspect Packaging for Evidence of Damage. Any shipping damage should be reported on SF364 Report of Discrepancy (ROD) as prescribed in AR 735-11-2/DLAR 4140.55/NAVMATINST 4355.73A/AFR 400-64/MCO 4430.3F.

4.2.2.2 Unpack and Inventory MK. If any item is missing, fill out and forward Transportation Deficiency Report (TDR) (SF361) as described in AR 55-38/NAVSUPINST 4610.33C/AFR 75-18/MCO P4610.19D/DLAR 4500.15.

4.2.2.3 Examine Each Item for Damage. If any item is damaged, fill out and forward SF364 Report of Discrepancy (ROD) as prescribed in AR 735-11-2/DLAR 4140.55/NAVMATINST 4355.73A/AFR-400-64/MCO 4430.3F. All damages should be reported as prescribed in DA Pam 738-750, as contained in Maintenance Management Update.

4.3 MK, Distribution and Consumables.

4.3.1 Items Supplied in MK and/or Required for Installation. Use Table 4-1 and Figure 4-1 to identify and inventory MK parts supplied to install Radio Set AN/VRC-87/88/90 Series.

4.3.2 Distribution and Issue Instructions.

- a. US Forces: Do not requisition MK. They will be shipped automatically.
- b. US Army Depots: Requisition MK through supply channels.
- c. Multiservice: Instructions shall be included for multiservice modifications.
- d. MAP/MAS Countries: Instructions shall be provided for MAP/MAS countries.

Table 4.1. Parts List for Installation of Radio Set AN/VRC-92 Series

NSN	ITEM DESCRIPTION AND PART NUMBER	QUANTITY IN MK	SMR CODE	FIGURE, ITEM NO.
5985-01-297-2971	Antenna, Vehicular AS-3900/VRC (A3017899-1)	2	PAOOF A	4-1, 2
5305-00-847-1159	Screw, Cap, Hexagon (3/8-16 x 1-3/4 in) MS35307-365	8	PAOZZA	
5310-00-913-8881	Nut, Hexagon (3/8-16 in) MS51971-3	8	PAOZZA	
5310-00-061-1258	Washer, Lock, Internal/External-Toothed (3/8 in) MS45904-76	16	PAOZZA	
5310-00-889-2527	Washer, Lock, Internal/External-Toothed (5/16 in) MS45904-72 (Not Used)	4	PAOZZA	
5306-00-225-9086	Bolt, Machine (5/16-24 x 5/8 in) MS90726-31 (Not Used)	2	PAOZZA	
5330-01-205-2864	Gasket (A3013655-1) (Not Used)	2	PAOZZA	
5975-01-188-8873	Mounting Base, Electrical Equipment MT-6352/VRC (A3013367-1)	1	PAOOF A	4-1, 1
5306-00-225-9089	Bolt, Machine (5/16-24 x 1 in) MS90726-34 (1 Not Used)	5	PAOZZA	
5310-00-889-2527	Washer Lock, Internal/External-Toothed (5/16 in) MS45904-72 (2 Not Used)	10	PAOZZA	
5310-00-880-7746	Nut, Hexagon (5/16-24 in) MS51968-5	5	PAOZZA	
5995-01-218-4703	Cable Assembly, Special Purpose, Electrical, CX-13292/VRC (4 FT, 0 IN) (A3014038-2)	2	PAOZZA	4-1, 8
5965-01-222-1420	Loudspeaker, Control-Unit, LS-671/VRC (A3014065-1)	2	PAOZZA	4-1, 4
4020-01-341-8795	Fiber Rope Assembly, Single Leg (A3167672-1)	1	PAOZZA	4-1, 5
	Plate, Mounting (A3253191-1)	1	XBOZZA	4-1, 7
	Bracket, Angle (A3253191-2)	2	XBOZZA	4-1, 6
5965-00-043-3463	Handset, H-250/U	2	PAOZZA	4-1, 3
5305-00-984-7350	Screw, Machine (5/16-24 x 1 in) MS25191-308	6	PAOZZA	
5310-00-880-7744	Nut, Hexagon (5/16-18 in) MS51967-5	4	PAOZZA	
5310-00-081-4219	Washer, Flat (5/16 in) MS27183-12	6	PAOZZA	
5310-00-407-9566	Washer, Lock (5/16 in) MS35338-45	6	PAOZZA	
5975-00-111-3208	Strap, Tiedown, Electrical Components MS3367-5-9	10	PAOZZA	

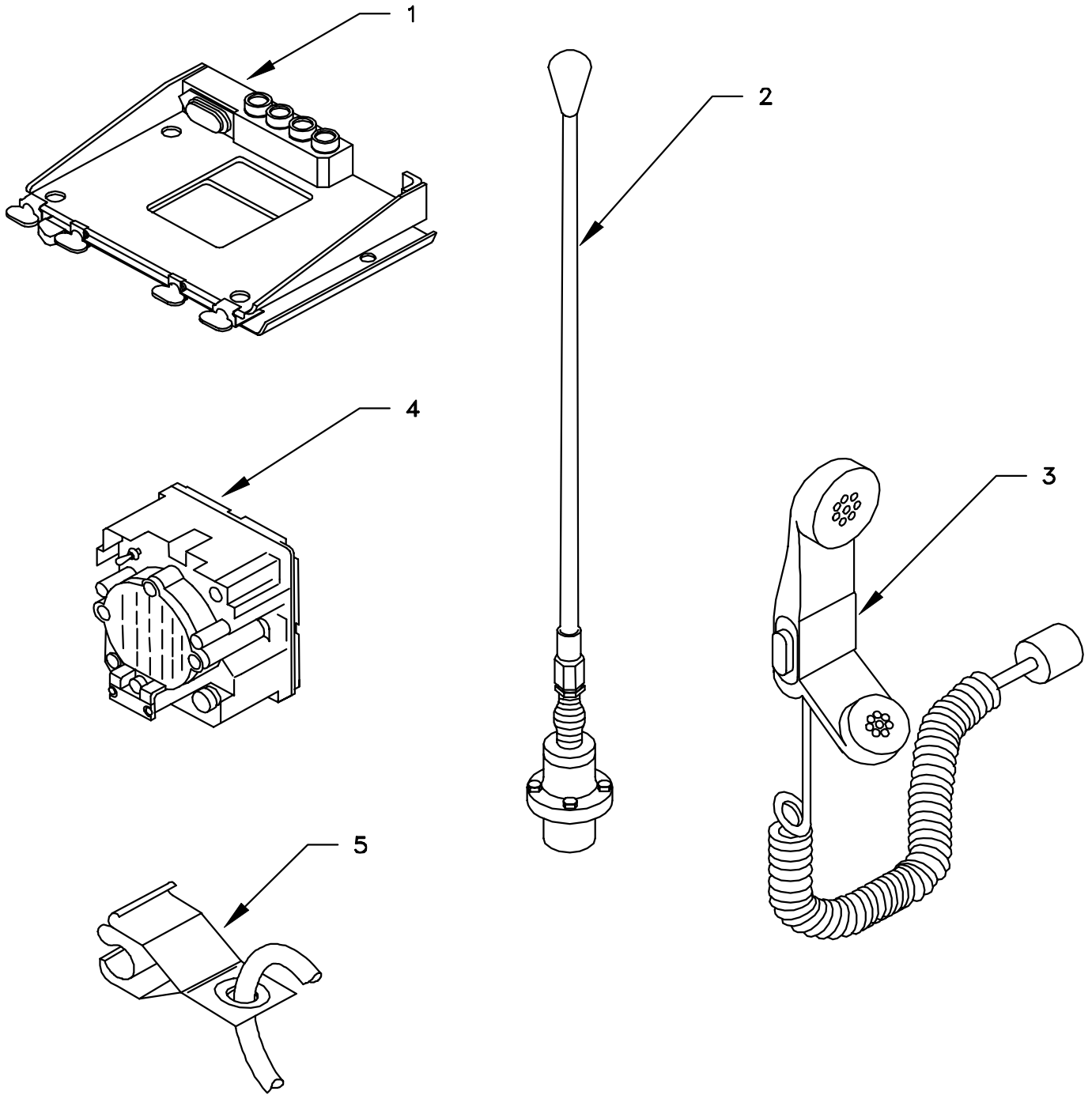


Figure 4-1(1). MK Illustrated Parts List

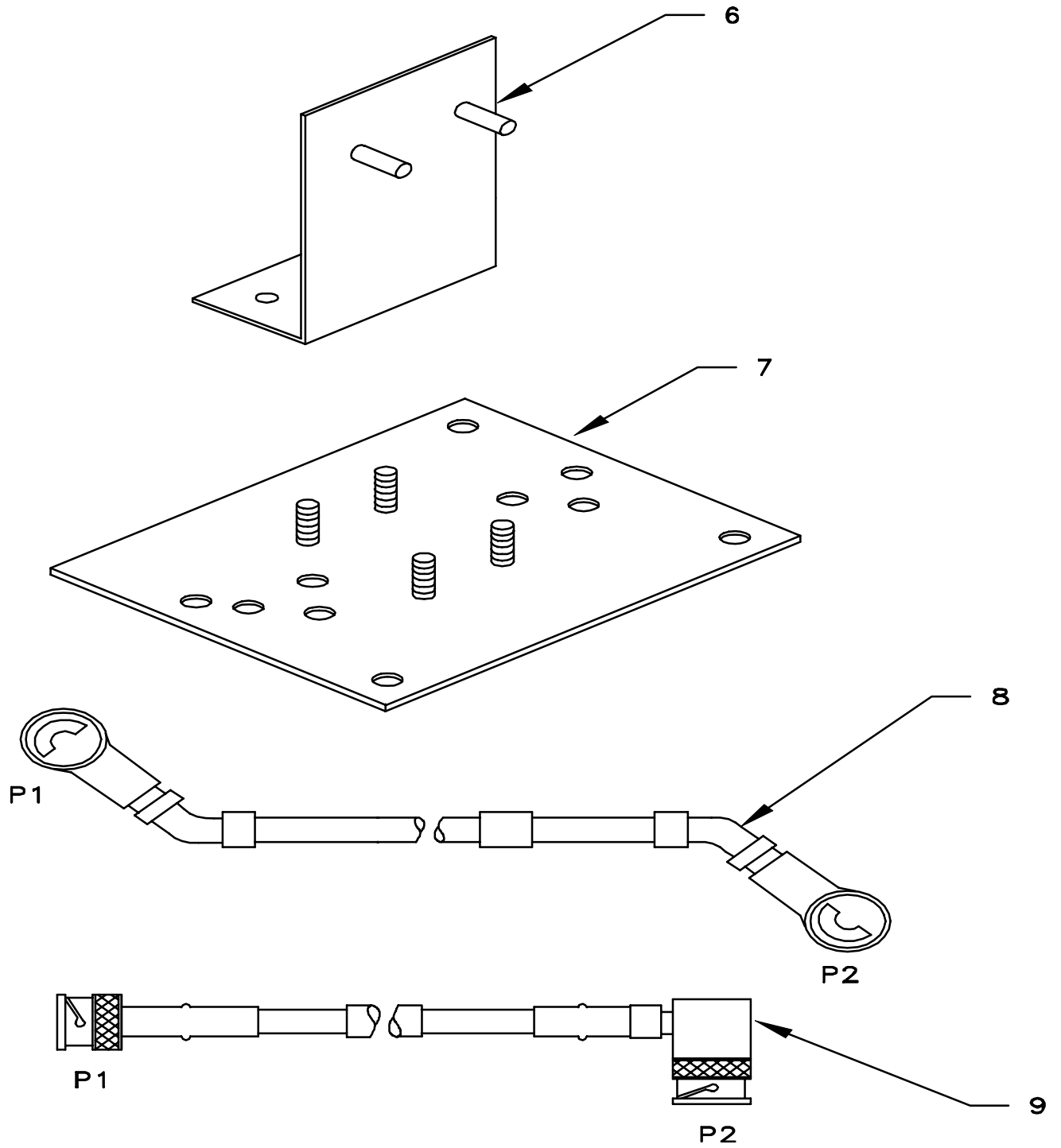


Figure 4-1(2). MK Illustrated Parts List

Table 4.2. Additional Items Required for Installation of Radio Set AN/VRC-92 Series

NSN	ITEM DESCRIPTION AND PART NUMBER	QUANTITY IN MK	SMR CODE	FIGURE, ITEM NO.
5975-01-235-1962	Mounting Base, Electrical Equipment MT-6353/VRC (A3014053-1)	1	PAOFFA	4-2, 1
5306-00-225-9089	Bolt, Machine (5/16-24 x 1 in) MS90726-34	4	PAOZZA	
5310-00-880-7746	Nut, Hexagon (5/16-24 in) MS51968-5 (1 Not Used)	2	PAOZZA	
5310-00-889-2527	Washer, Lock, Internal/External-Toothed (5/16 in) MS45904-72 (Not Used)	6	PAOZZA	
5310-00-08104219	Washer, Flat (5/16 in) MS27183-12 (Not Used)	2	PAOZZA	
	Nut Strip	1	XBOZZA	
5975-00-111-3208	Strap, Tiedown, Electrical Components MS3367-5-9	4	PAOZZA	
5995-01-300-9324	Cable Assembly, Power, Electrical CX-13303/VRC (4 FT, 6 IN) (A3014040-9) (Not Used)	1	PAOZZA	4-2, 4
5995-01-222-4209	Cable Assembly, Special Purpose, Electrical CX-13291/VRC (3 FT, 0 IN) (A3014037-1)	1	PAOZZX	4-2, 2
5995-01-219-7025	Cable Assembly, Radio Frequency CG-3856/VRC (5 FT, 0 IN) (A3014032-3)	1	PAOZZA	4-2, 3

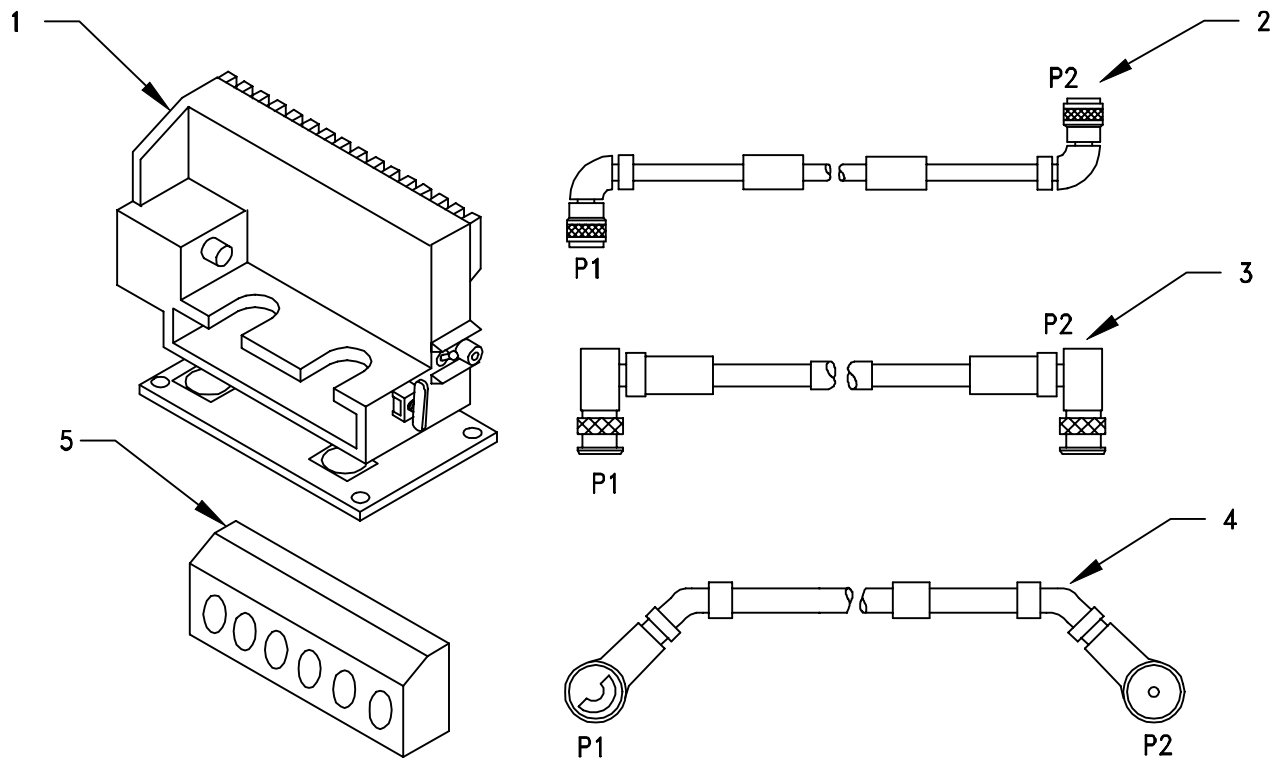


Figure 4-2. Illustrated Parts List for Table 4-2

4.3.3 Consumable Materials. The table below lists materials required for installation but not supplied with MK.

NSN	NOMENCLATURE
8040-00-117-8510	Adhesive-Sealant, Clear, RTV
6850-00-880-7616	Silicone Compound, MIL-S-8660
8030-00-292-1102	Conductive Anti-seize Compound

4.4 Tools and Test, Measurement, and Diagnostic Equipment (TMDE) Required. The following tools and TMDE are needed for installation.

NOMENCLATURE	NSN	QUANTITY
Radio Set*		1
Electric Grinder or equivalent		1
Pocket Knife, Electrician's	5110-00-240-5943	1
Screwdriver, No. 2 Point Phillips, 4 in	5120-00-234-8913	1
Screwdriver, 1/4 in Flatblade, 4 in	5120-00-222-8852	1
Pliers, Round Nose	5120-00-240-6172	1
Pliers, Diagonal Cutting	5110-00-965-0974	1
Wrench, Open/Box:		
1/2 in	5120-00-228-9506	1
9/16 in	5120-00-228-9507	1
Handle, Socket Wrench:		
Socket		
1/2 in	5120-00-240-5364	1
9/16 in	5120-00-237-0977	1
	5120-00-227-6704	

* Use radio issued with your vehicle if available.

5. INSTALLATION PROCEDURES.

This section describes where and how to install MK items in the vehicle. See Figure 5-1 for an overall view of where vehicular and MK equipment, as well as radio components, typically will be installed. When installing MK equipment, be sure to read and follow instructions and illustrations carefully. To install MT-6353/VRC mounting base, see section 5.5 for instructions.

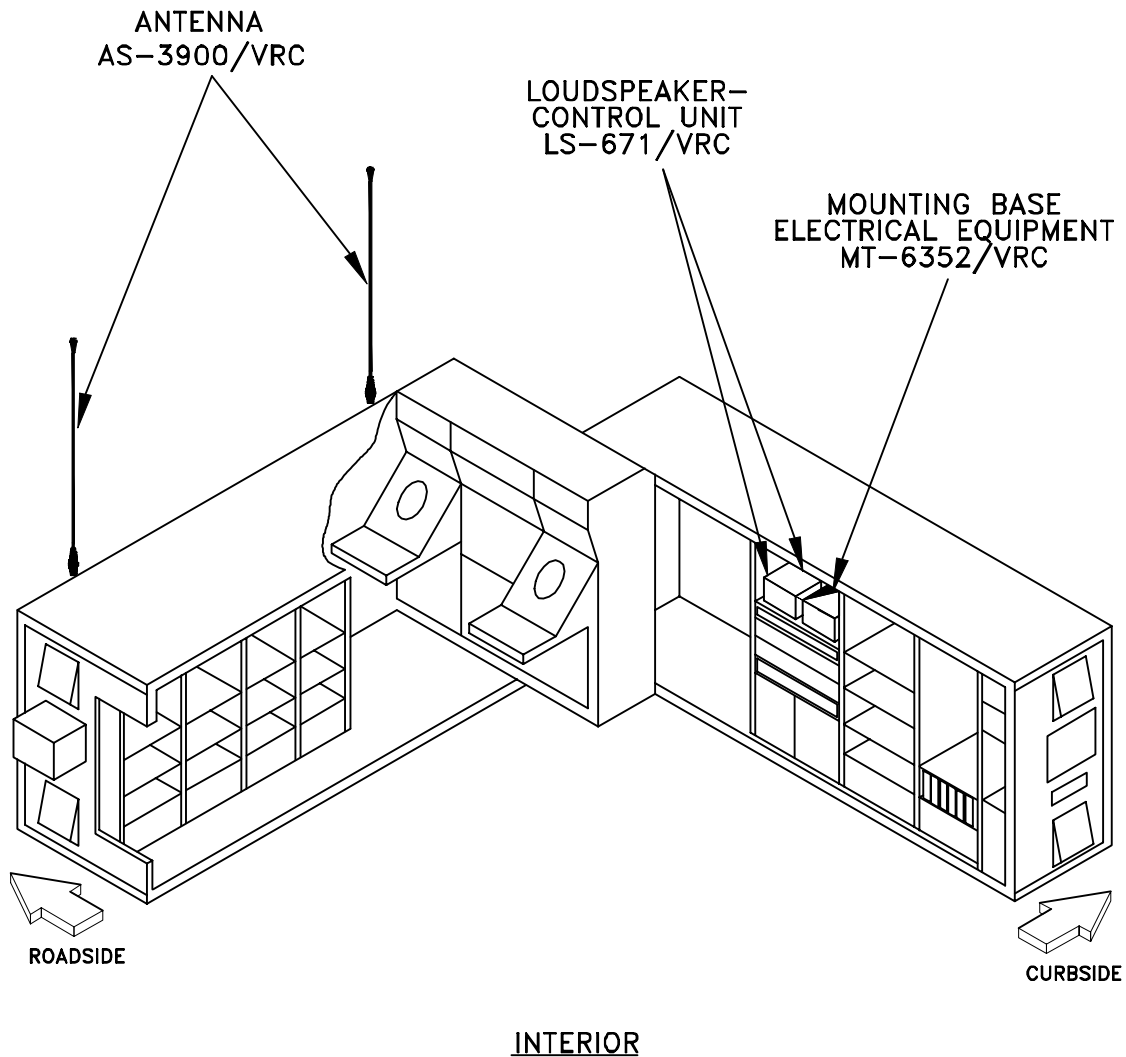


Figure 5-1(1). MK and Radio Installation: MK Equipment Locations

5. INSTALLATION PROCEDURES. Continued.

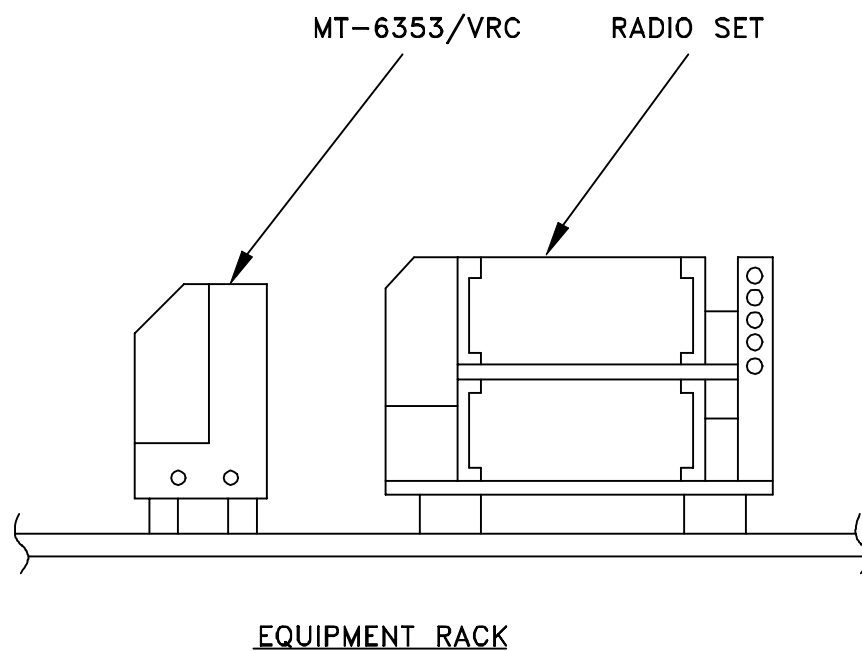


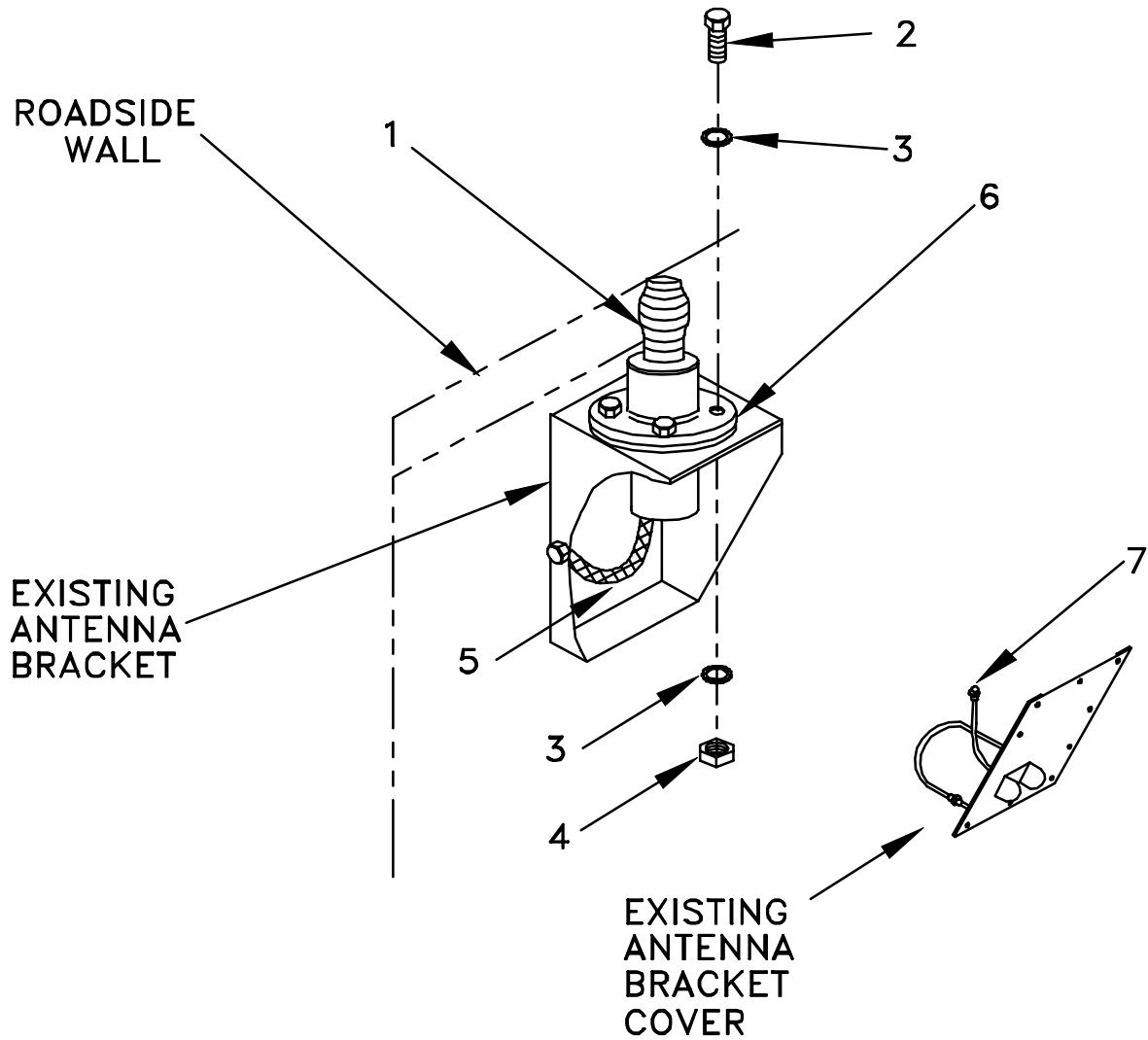
Figure 5-1(2). MK and Radio Installation: Radio Equipment Locations

5.1 Installation of Antenna, Vehicular, AS-3900/VRC (antenna).

5.1.1 Installation of Antenna Base. Use the following procedures to install both antenna bases. See Figure 5-1(1) for location.

ITEM	ACTION	REMARKS
NOTE		
Apply a thin coat of adhesive-sealant to both sides of each internal/external toothed (IET) washer during installation and to the area of contact where IET washer is to be placed.		
a. Existing antenna bracket.	De-install and retain the existing cover plate and mounting hardware.	
b. Antenna base (1).	Place on top of existing gasket (6) and antenna bracket; then align mounting holes. See Figure 5-2.	
c. Four cap screws (2), eight IET washers (3), and four nuts (4).	Install and secure to antenna base (1) and antenna bracket.	Tools: 9/16 in socket and 9/16 in open/box wrench.
d. Ground strap (5) and existing mounting hardware.	Install and secure to side of antenna bracket.	
e. Existing RF cable (7).	Attach existing RF cable (7) connected to cover plate to connector J1 of antenna base (1).	
f. Existing antenna bracket cover plate.	Re-install to existing antenna bracket.	

5.1.1 Installation of Antenna Base. Continued.

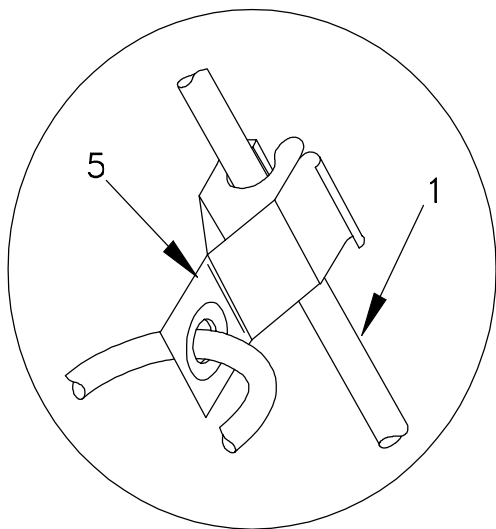


- 1. ANTENNA BASE
- 2. CAP SCREW (3/8-16 X 1 3/4 IN)
- 3. IET WASHER (3/8 IN)
- 4. NUT (3/8-16 IN)
- 5. GROUND STRAP (P/O ANTENNA)
- 6. EXISTING RFI GASKET
- 7. EXISTING RF CABLE

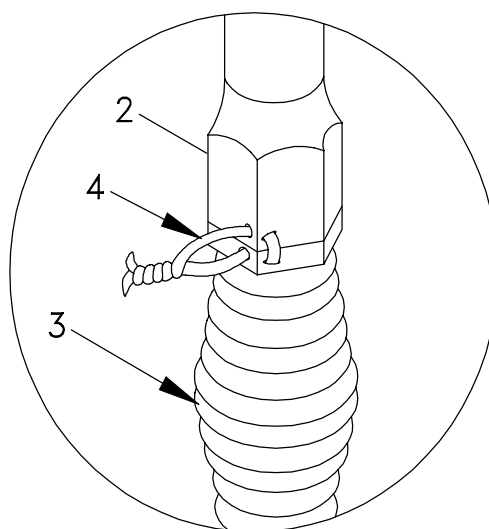
Figure 5-2. Antenna Base Installation

5.1.2 Installation of Top Antenna Assembly. The top portion of the antenna includes a lower element and an upper element (with installed cap). Use the following procedure to assemble, install and tie down all antennas.

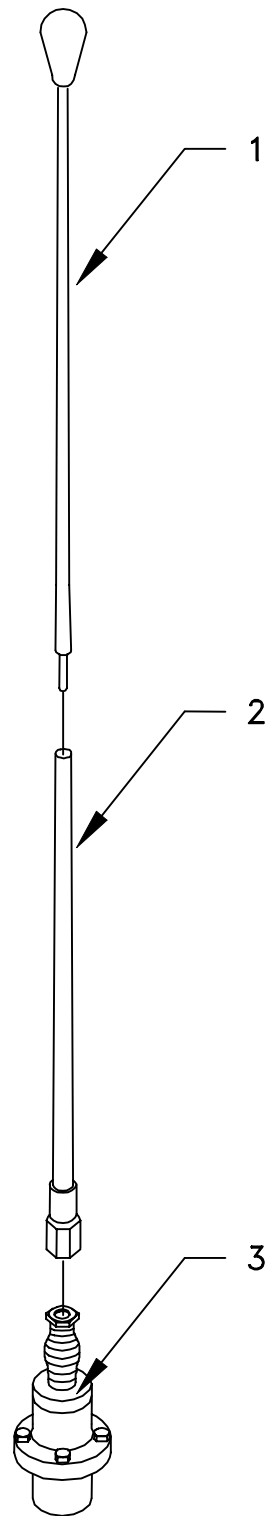
ITEM	ACTION	REMARKS
a. Antenna elements (1, 2).	Apply silicone compound to element threads and assemble. See Figure 5-3.	
b. Antenna element (2).	Install and hand tighten to antenna base (3).	
c. Lock wire (4).	Install to antenna element (2) and antenna base (3). See Figure 5-3, Detail A. Cut and remove excess wire with diagonal cutting pliers.	
d. Fiber rope assembly (5).	Attach clip to antenna element (1). Tie rope to vehicle to position antenna in desired location. See Figure 5-3, Detail B.	



DETAIL B



DETAIL A

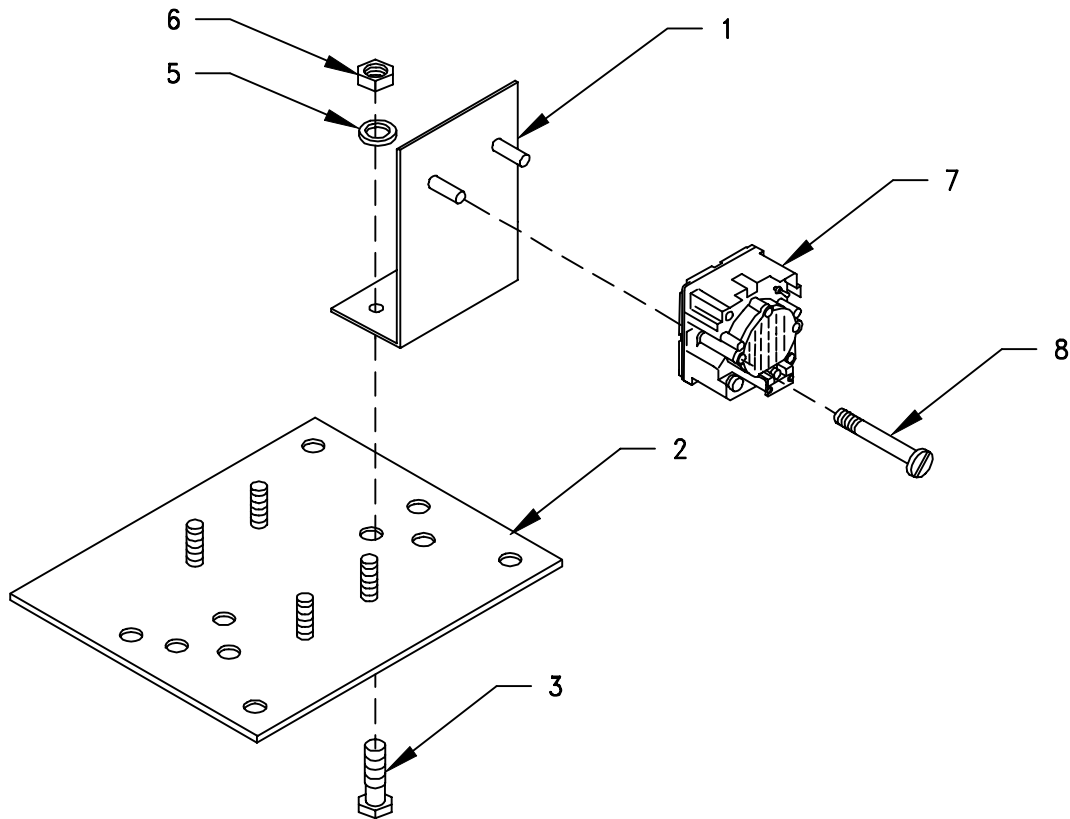


- 1. ANTENNA ELEMENT (UPPER)
- 2. ANTENNA ELEMENT (LOWER)
- 3. ANTENNA BASE
- 4. LOCK WIRE
- 5. FIBER ROPE ASSEMBLY

Figure 5-3. Top Antenna Assembly Installation

5.2 Installation of Loudspeaker, Control-Unit, LS-671/VRC (speaker). Use the following procedures to install both speakers. See Figure 5-1 (1) for locations.

ITEM	ACTION	REMARKS
a. Bracket, angle (1).	Place on mounting plate (2) and align mounting holes. See Figure 5-4 (1).	
b. Three machine screws (3), three flat washers (4), three lock washers (5), and three nuts (6).	Install and secure to speaker bracket (1) and mounting plate (2).	Tools: 1/2 in socket and phillips screwdriver.
c. Speaker (7).	Place on bracket angle (1).	
d. Two externally-relieved body screws (8).	Thread through and secure to speaker (7) and bracket, angle (1).	Tools: Flatblade screwdriver.
e. Handset.	Connect and secure to speaker (7) connector J2.	



- | | |
|--------------------------------------|-----------------------------|
| 1. BRACKET, ANGLE | 5. LOCK WASHER (5/16 IN) |
| 2. MOUNTING PLATE | 6. NUT (5/16-24 IN) |
| 3. MACHINE SCREW (5/16-24 X 1 IN FH) | 7. SPEAKER |
| 4. FLAT WASHER (5/16 IN) | 8. BODY SCREW (P/O SPEAKER) |

Figure 5-4 (1) Loudspeaker Installation

5.2 Installation of Loudspeaker, Control-Unit, LS-671/VRC (speaker). Continued.

ITEM	ACTION	REMARKS
a. Mounting plate (1).	Remove a 1" diameter area of paint (both sides) centered around the four mounting holes of the mounting plate (1) and the top of the existing equipment rack. Clean the paint removed surfaces and apply a thin coat of conductive anti-seize compound. Place on existing equipment rack over existing tapped holes. See Figure 5-4(2).	Tools: Electric grinder or equivalent.
b. Four machine bolts (2) and four IET washers (3).	Install and secure to mounting plate (1) and	Tools: 1/2 in socket

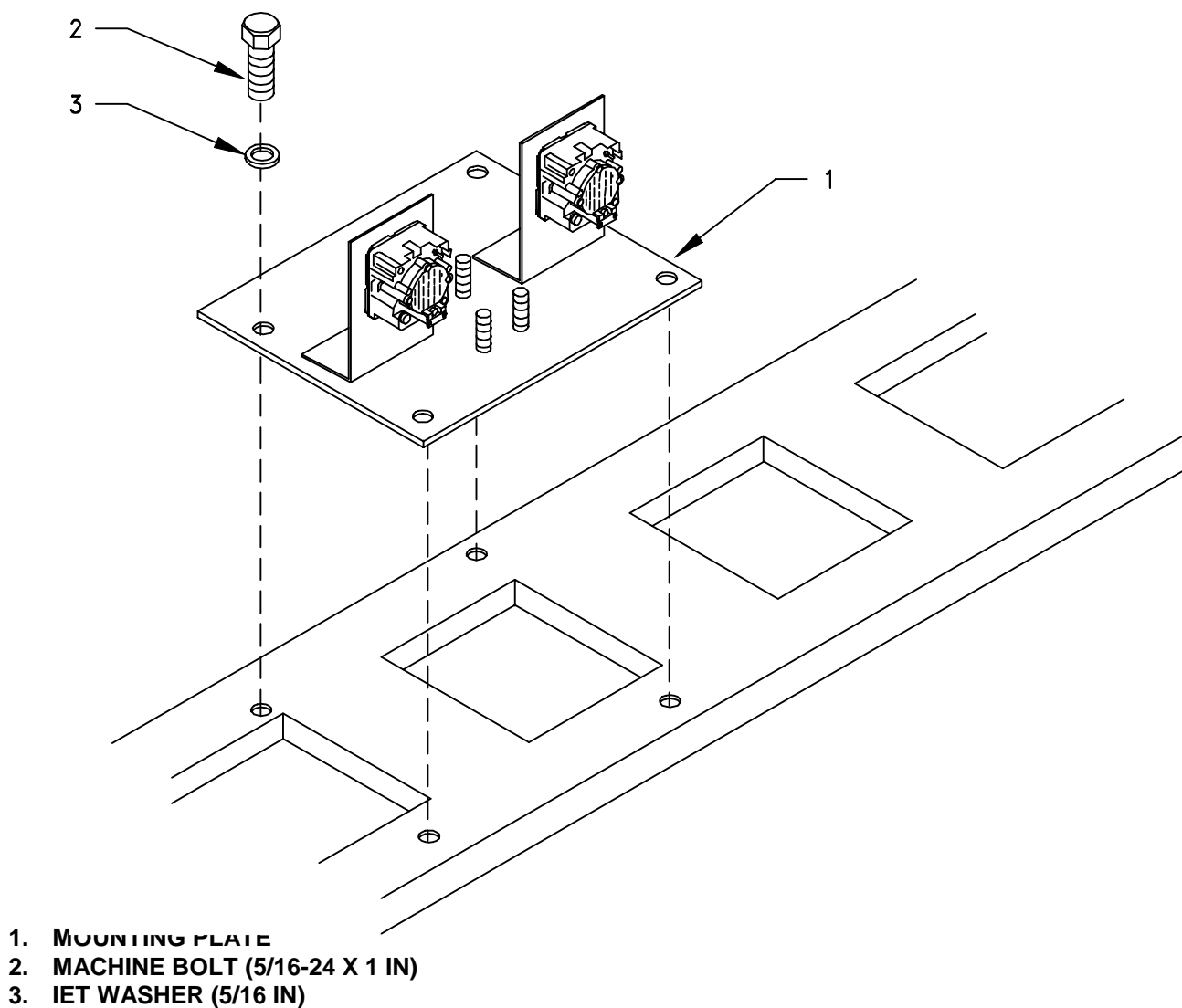
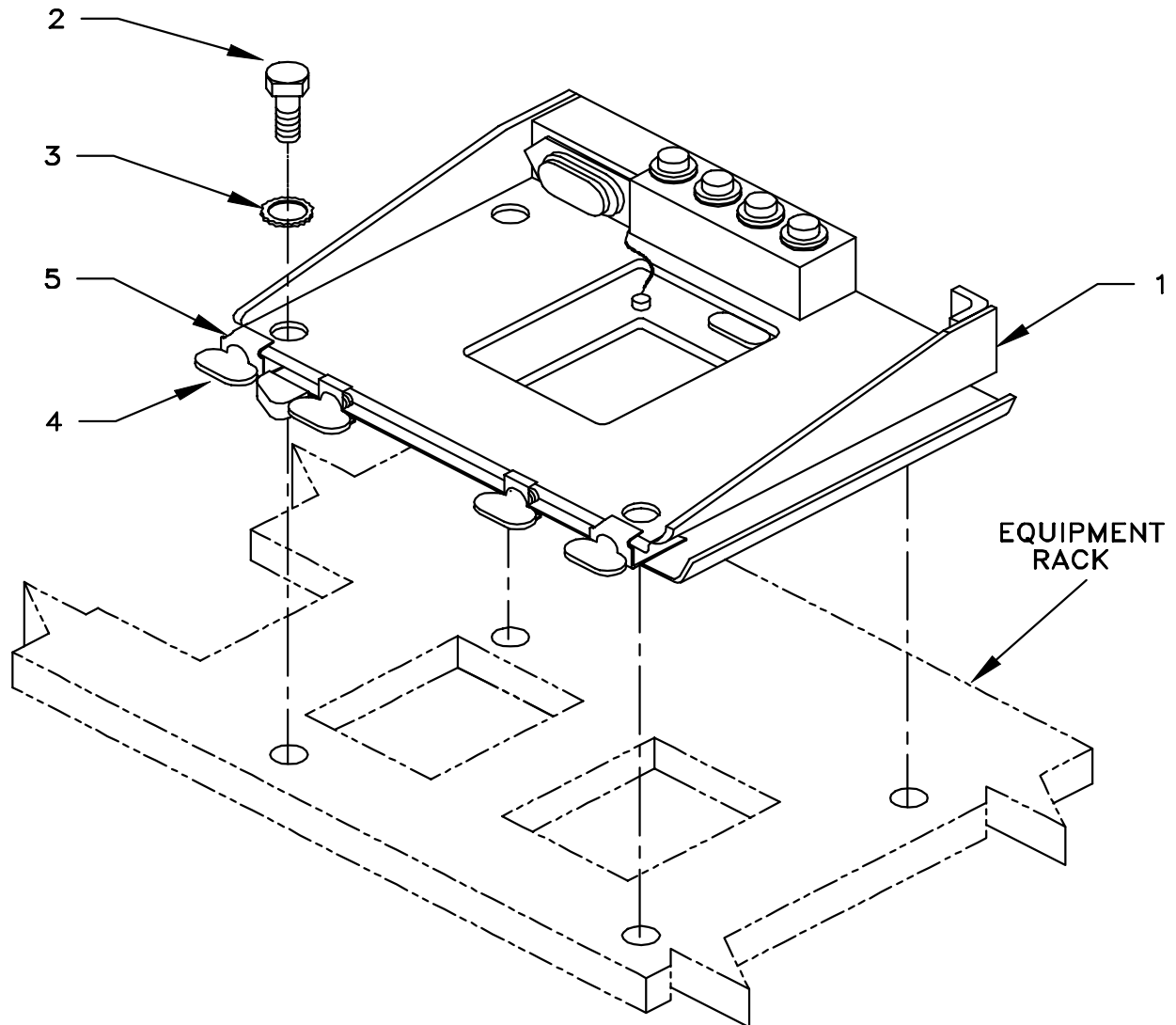


Figure 5-4 (2) Mounting Plate Installation

5.3 Installation of Mounting Base, Electrical Equipment MT-6352/VRC (mounting base). Remove and retain attaching bag of 5/16 mounting hardware. To insure good electrical grounding, any rust, corrosion or paint around mounting holes in radio rack should be removed before installing the mounting base. See Figure 5-1(1) for location; then see Figure 5-5 and perform the following steps.

ITEM	ACTION	REMARKS
NOTE		
Apply a thin coat of adhesive-sealant to both sides of each internal/external-toothed (IET) washer during installation, and to the area of contact where IET washer is to be placed.		
a. Mounting base (1).	Remove a 1" diameter area of paint on the under side of mounting base (1) centered around the four mounting holes and on the top of existing equipment rack. Clean the paint removed surfaces and apply a thin coat of conductive anti-seize compound.	Tools: Electric grinder or equivalent.
b. Mounting base (1).	Place on rack over existing holes. See Figure 5-5.	
c. Two outer thumbscrews (4).	Turn ccw until both sets of threads have cleared center of holes.	
d. Mounting base (1).	Align four holes with matching hole pattern in rack.	
e. Four machine bolts (2) and four internal/external toothed (IET) washers (3).	Install and secure to mounting base (1) and rack.	Tools: 1/2 in socket and 1/2 in open/box wrench.
f. Two outer thumbscrews (4).	Tighten and secure to rim clenching clamps (5) and mounting base (1).	

5.2 Installation of Mounting Base, Electrical Equipment MT-6352/VRC (mounting base). Continued.



- 1. MOUNTING BASE
- 2. MACHINE BOLT (5/16-24 X 1 IN)
- 3. IET WASHER (5/16 IN)
- 4. THUMBSCREW
- 5. RIM CLENCHING CLAMP

Figure 5-5. Mounting Base Installation

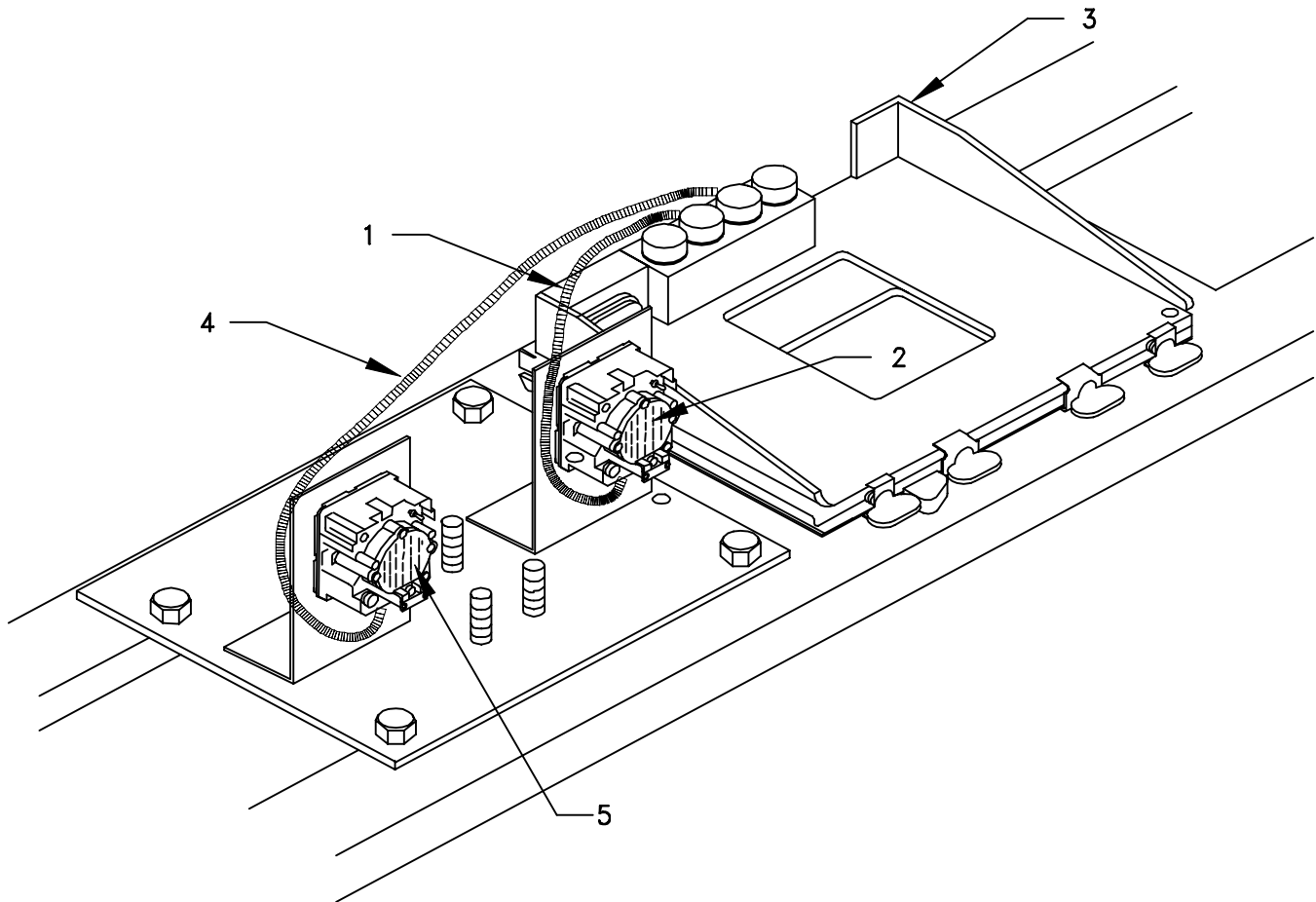
5.4 Installation of Cables. To accomplish the installation, leave loop clamps and tiedown straps loose enough to adjust cable slack and allow easy adjustment of equipment. When installation is complete, tighten and secure all clamps, clips and tiedown straps.

WARNING

Make sure vehicle power source is positioned OFF or disconnected before installing cables.

ITEM	ACTION	REMARKS
a. Existing RF cables.	Route to right front of MT-6352/VRC and MT-6353/VRC.	
b. Speaker cable (1) connector P1.	Connect and secure to speaker (2) connector J1.	
c. Speaker cable (1) connector P2.	Connect and secure to mounting base (3) connector J3.	
d. Speaker cable (4) connector P1.	Connect and secure to speaker (5) connector J1.	
e. Speaker cable (4) connector P2.	Connect and secure to mounting base (3) connector J4.	
f. Existing power cables.	Connect and secure to mounting base (3) connector J1 and to mounting base (6) connector J1.	

5.4 Installation of Cables. Continued.



1. SPEAKER CABLE, CX-13292/VRC (4 FT, 0 IN)
2. SPEAKER
3. MOUNTING BASE
4. SPEAKER CABLE, CX-13292/VRC (4 FT, 0 IN)
5. SPEAKER
6. MT-6353/VRC

Figure 5-6 Cable Installation: RF, Speaker, and Power Cabling

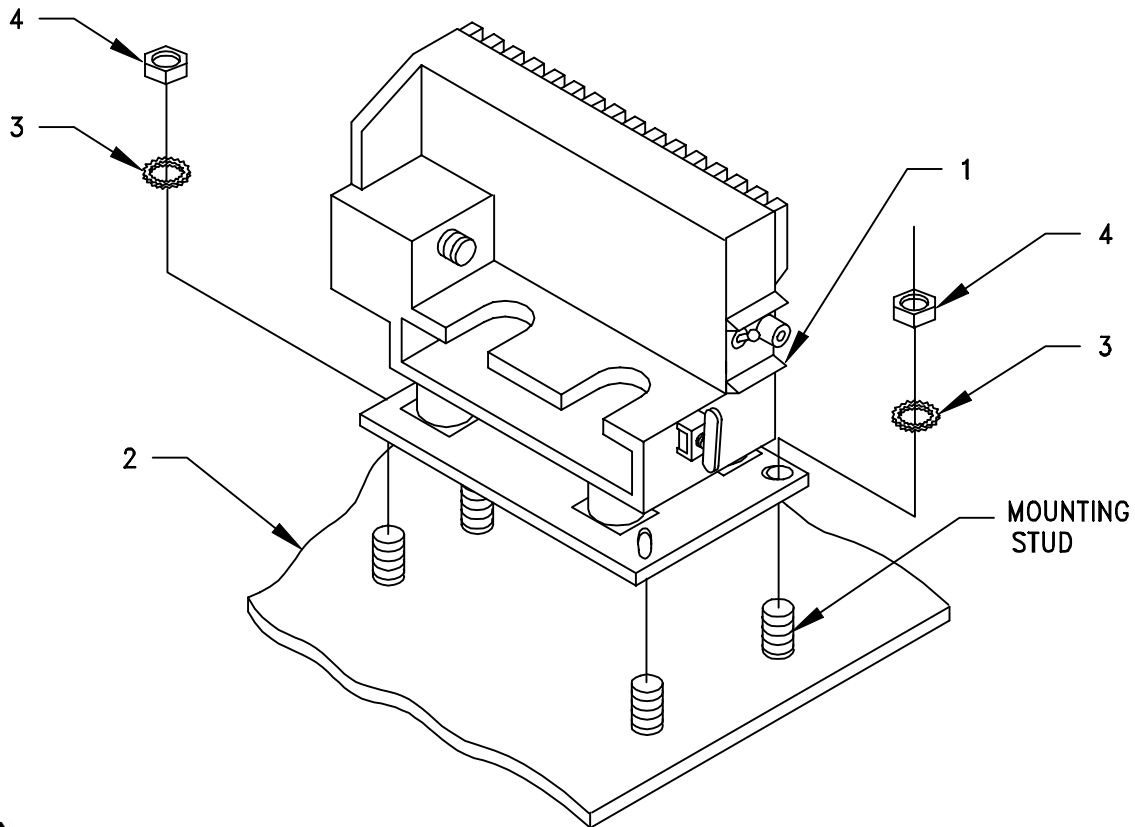
5.5 Installation of Mounting Base, Electrical Equipment MT-6353/VRC. Use the following instructions to install MT-6353/VRC mounting base. Refer to Section 5.6 for connection of cables.

ITEM	ACTION	REMARKS
------	--------	---------

NOTE

Apply a thin coat of adhesive-sealant to both sides of each internal/external-toothed (IET) washer during installation, and to the area of contact where IET washer is to be placed. Before proceeding, connect and secure CX-13291/VRC control cable and existing power cable to MT-6353/VRC mounting base. (Refer to Section 5.6, step b.)

- | | | | |
|----|---|--|--|
| a. | MT-6353/VRC mounting base (1). | Remove a 1" diameter area of paint on the top surface of the two front mounting holes. Clean the paint removed surfaces and apply a thin coat of conductive anti-seize compound. Place on mounting plate (2) over studs. See Figure 5-7. | Tools: Electric grinder or equivalent. |
| b. | Four Internal/external toothed (IET) washers (3) and four nuts (4). | Install and secure MT-6353/VRC mounting base (1) to the four studs on mounting plate (2). | Tools: 1/2 in socket |



- 1. MOUNTING BASE
- 2. MOUNTING PLATE
- 3. IET WASHER (5/16 IN)
- 4. NUT (5/16-18 IN)

Figure 5-7. MT-6353/VRC Mounting Base Installation

5.6 Post-Installation and Checkout. After equipment is installed and cables are connected, perform the following steps.

ITEM	ACTION	REMARKS
a. Equipment.	Check for secure mounting. Check for loose parts, connectors, and mounting hardware.	
b. Cables.	Check for proper installation and connection of cables. See figure 5-8 for cable connections. Unused cables should be stowed in appropriate place inside the vehicle.	
c. Loop clamps.	Check that all have been properly installed and tightened.	
d. Protective covers.	Insure that all installed cables are covered when not in use or connected.	
e. Radio issued with vehicle.	Install and connect cables. See TM 11-5820-890-20-1 or TM 11-5820-890-20-4 for installation and operational (OP) checks and instructions.	
f. MK line replaceable units.	See TM 11-5820-890-20P for Repair Parts and Special Tools List (RPSTL) information.	

5.6 Post-Installation and Checkout. Continued.

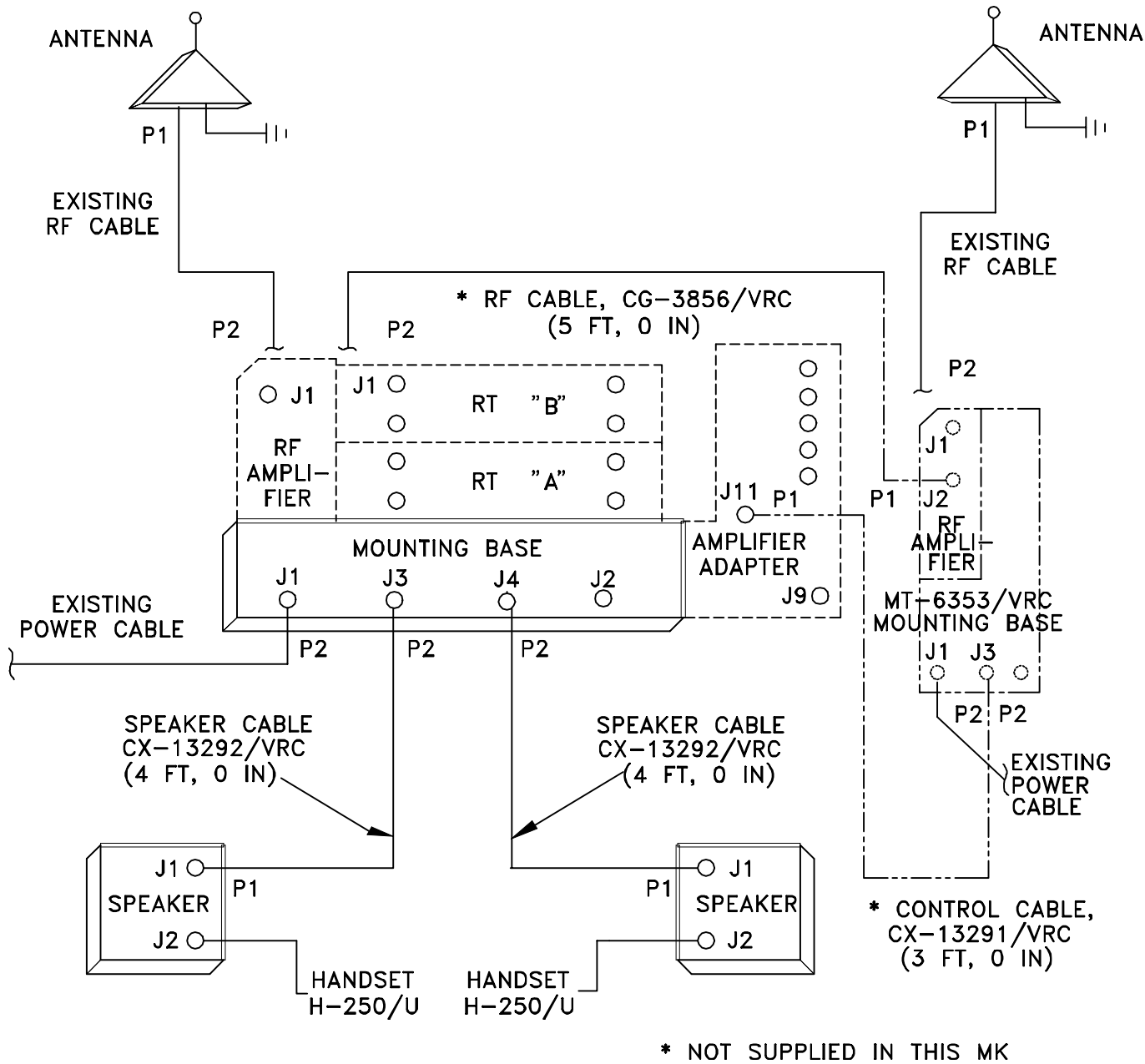


Figure 5-8. Cable Diagram: For AN/VRC-92 Series

5.6 Post-Installation and Checkout. Continued.

CABLE ASSEMBLY	FROM			TO		
	CABLE CONN.	UNIT	UNIT CONN.	CABLE CONN.	UNIT	UNIT CONN.
Existing power cable	P2	Mounting base	J1			
*CX-13292/VRC (3 FT, 0 IN)	P1	Mounting base	J3	P1	Speaker	J1
*CX-13292/VRC (3 FT, 0 IN)	P2	Mounting base	J4	P1	Speaker	J3
Existing RF cable	P2	RF amplifier	J1	P1	Roadside antenna base	J6
Existing RF cable	P2	RF amplifier (MT-6353/VRC)	J1	P1	Roadside antenna base	J1
*CX-13291/VRC (3 FT, 0 IN)	P1	Amplifier-adapter	J11	P2	MT-6353/VRC mounting base	J3
*CG-3856/VRC (5 FT, 0 IN)	P2	RT "B"	J1	P1	RF amplifier (MT-6353/VRC)	J2
Existing power cable				P2	MT-6353/VRC mounting base	J1

*Not supplied in this MK.

Figure 5-8. Cable Diagram: For AN/VRC-92 Series. Continued.

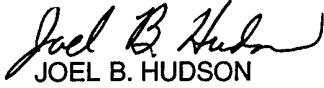
APPENDIX A

REFERENCES

AMDF	Army Master Data File (Microfiche)
AR 710-2	Supply Policy Below the Wholesale Level as Contained in Unit Supply UPDATE
AR 725-50	Requisitioning, Receipt and Issuing System in UPDATE
DA PAM 25-30	Consolidated Index of Army Publications (Microfiche)
DA PAM 710-2-1	Using Unit Supply System Manual Procedures as Contained in Unit Supply UPDATE
SB 11-131-2	Vehicular Radio Sets and Authorized Installations (SINCGARS)
TM 11-5820-890-10-1	Operator's Manual (ICOM Radio Sets)
TM 11-5820-890-10-3	Operator's Manual (Non-ICOM Radio Sets)
TM 11-5820-890-20-1	Unit Maintenance Manual (ICOM Radio Sets, Vol. 1)
TM 11-5820-890-20-2	Unit Maintenance Manual (ICOM Radio Sets, Vol. 2)
TM 11-5820-890-20-3	Unit Maintenance Manual Handbook (ICOM Radio Sets)
TM 11-5820-890-20-4	Unit Maintenance Manual (Non-ICOM Radio Sets)
TM 11-5820-890-20P	Repair Parts and Special Tools List

By Order of the Secretary of the Army:

Official:



JOEL B. HUDSON
*Administrative Assistant to the
Secretary of the Army*

9920220

ERIC K. SHINSEKI
*General, United States Army
Chief of Staff*

DISTRIBUTION:

To be distributed in accordance with the initial distribution number (IDN) 360449 requirements for TB 11-5820-890-20-99.

SOMETHING WRONG WITH THIS PUBLICATION



THEN ... JOT DOWN THE INFO ABOUT IT ON THIS FORM. CAREFULLY TEAR IT OUT. FOLD IT AND DROP IT IN THE MAIL.

FROM: (PRINT YOUR UNIT'S COMPLETE ADDRESS)

Commander
Stateside Army Depot
ATTN: AMSTA-US
Stateside, NJ 07703-5007

DATE SENT

10 July 1995

PUBLICATION NUMBER

TM 11-5840-340-12

PUBLICATION DATE

23 Jan 74

PUBLICATION TITLE

Radar Set AN/PRC-76

BE EXACT PIN-POINT WHERE IT IS

IN THIS SPACE TELL WHAT IS WRONG AND WHAT SHOULD BE DONE ABOUT IT:

PAGE NO	PARA-GRAPH	FIGURE NO	TABLE NO
2-25	2-28		
3-10	3-3		3-1
5-6	5-8		
		FO-3	

Recommend that the installation antenna alignment procedure be changed throughout to specify a 20 IFF antenna lag rather than 10

REASON: Experience has shown that with only a 10 lag, the antenna servo system is too sensitive to gusting in excess of 25 knots, and has a tendency to rapidly accelerate and decelerate as it hunts, causing strain to the drive train. Hunting is minimized by adjusting the lag to 20 without degradation of operation.

Item 5, Functional column. Change 2 dB" to 3 dB".

REASON: The adjustment procedure for the TRANS POWER FAULT indicator call for a 3 dB (500 watts) adjustment to light the TRANS POWER FAULT indicator.

Add new step f.1 to read, Replace cover plate removed in step d above."

REASON: To replace the cover plate.

ZONE C 3. On J1-2, change +24 VDC" to +5 VDC".

REASON: This is the output line of the 5 VDC power supply. +24 VDC is the input voltage.

PRINTED NAME, GRADE OR TITLE AND TELEPHONE NUMBER

SSG I. M. DeSpirito 999-1779

SIGN HERE

TEAR ALONG DOTTED LINE

SOMETHING WRONG WITH THIS PUBLICATION



THEN ... JOT DOWN THE INFO ABOUT IT ON THIS FORM. CAREFULLY TEAR IT OUT. FOLD IT AND DROP IT IN THE MAIL.

[Empty box for name and address]

DATE SENT

PUBLICATION NUMBER

PUBLICATION DATE

PUBLICATION TITLE

BE EXACT PIN-POINT WHERE IT IS

IN THIS SPACE TELL WHAT IS WRONG AND WHAT SHOULD BE DONE ABOUT IT:

PAGE NO

PARA-GRAPH

FIGURE NO

TABLE NO

TEAR ALONG DOTTED LINE

PRINTED NAME, GRADE OR TITLE AND TELEPHONE NUMBER

SIGN HERE

FILL IN YOUR
UNIT'S ADDRESS

FOLD BACK

DEPARTMENT OF THE ARMY



OFFICIAL BUSINESS

PLEASE
AFFIX
STAMP
POSTAGE
REQUIRED

TEAR ALONG DOTTED LINE

Commander
U.S. Army Communications-Electronics Command
and Fort Monmouth
ATTN: AMSEL-LC-LEO-D-CS-CFO
Fort Monmouth, New Jersey 07703-5000



FOLD BACK

